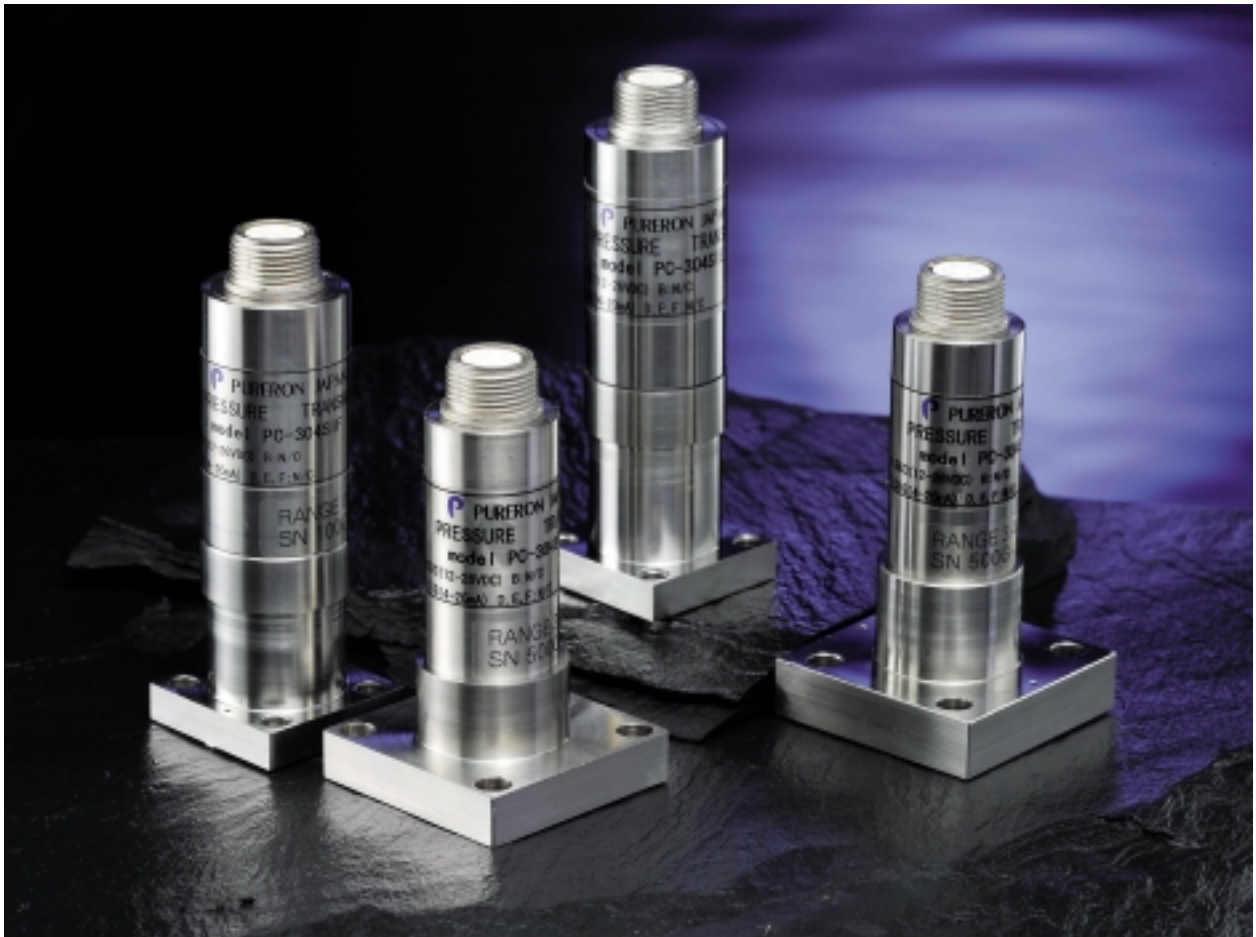


Pressure Sensor for IGS



High Accuracy

- High accuracy within $\pm 0.25\%$ or less with linearity, hysteresis and repeatability all considered. Pressure detection also available (Pressure range 100G or higher).

Wide Variation

- C- Seal / H1G-Seal / W- Seal types available (1.125 inch types are also available for C-seal and W-seal).

Wide Temperature Range

- Wide temperature range operations applicable by temperature insensitive structural design.

Specification

Seal Type	Supply Voltage	Output	1.5" Type	1.125" Type
C-Seal	DC 5V (6V max)	0 to 100mV (0 to 50mV)	PC-302SEK	PC-302SIE
	DC 24V	4 to 20mA	PC-304SEK	PC-304SIE
	DC 24V	0 to 5V	PC-305SEK	PC-305SIE
H1G-Seal	DC 5V (6V max)	0 to 100mV (0 to 50mV)	PC-302SHK	-
	DC 24V	4 to 20mA	PC-304SHK	-
	DC 24V	0 to 5V	PC-305SHK	-
W-Seal	DC 5V (6V max)	0 to 100mV (0 to 50mV)	PC-302SFK	PC-302SIF
	DC 24V	4 to 20mA	PC-304SFK	PC-304SIF
	DC 24V	0 to 5V	PC-305SFK	PC-305SIF

Common Specification

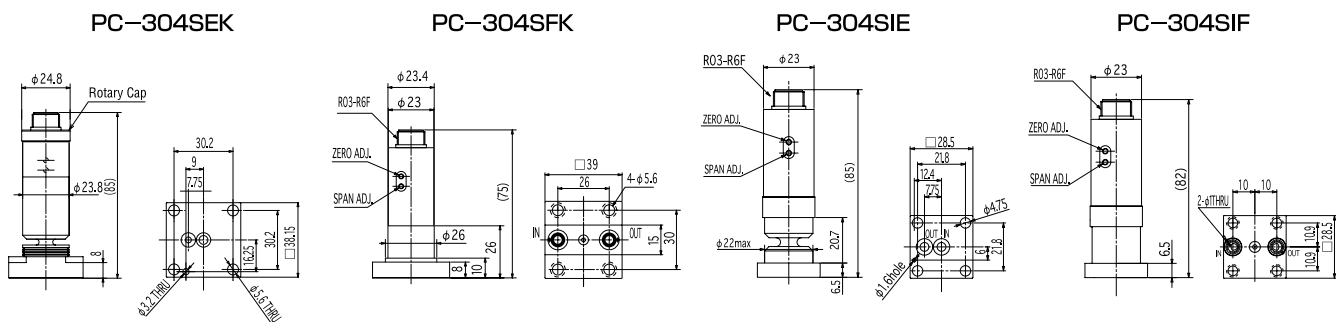
Model	Gauge Pressure (G)				
	PSI	25G	50G	100G	200G
Pressure Range	KPa	0 to 172.4	0 to 344.7	0 to 689.5	0 to 1,379
Accuracy		0.5%FS		0.25%FS	
Gas Contact Material		SUS316L			
Breaking Pressure		Full Scale×5			
Overload Pressure		Full Scale×2			
External Leakage		$2 \times 10^{-11} \text{Pa} \cdot \text{m}^3/\text{sec}$ or less			
Temperature Drift		0.05%FS/°C			

Series Specification

Model	302 ※1	304 ※2	305 ※2
Signal Output	0 to 100mV (100G or more) 0 to 50mV (25G/50G)	4 to 20mA	0 to 5V
Storage Temperature Range (No Power Distribution)	-57 to 93°C	-40 to 85°C	
Temperature Compensation Range	-1 to 71°C	0 to 70°C	
Span	100mV ± 15mV 50mV ± 15mV	16mA ± 0.16mA	5V ± 0.5V
Offset	0mV ± 10mV	4mA ± 0.4mA	0V ± 0.1V

※1: PC-302 can be coupled. ※2: For PC-304/PC-305, output reference can be set to vacuum (-100KPa) (Specify when you order).

Dimensional Outline Drawings



How to Order

Signal Output Seal Type Pressure Range Output Reference (304/305 only)

PC - 302 SFK - 100G - CT - V

302 : 0 to 100mV : 0 to 50mV 304 : 4 to 20mA 305 : 0 to 5V	C : SEK / SIE H1G : SHK W : SFK / SIF	25G : 0 to 172.4KPa 50G : 0 to 344.7KPa 100G : 0 to 689.5KPa 200G : 0 to 1,379KPa	Blank: Atmosphere Pressure V: Vacuum
---	---	--	---

※Specification is subject to change without notice.