

Minimal Flow Rate Ultra Compact Ceramic Gas Filter



Ultra Small / Light Weight

- The SPC series is designed ultra compact ($\Phi 21 \times 84\text{mm}$) and light weight (90g) suitable for small space applications in cylinder cabinet and equipment.

High Accuracy Filtration

- High accuracy filtration is achieved by multilayered ceramic element. Zero particle count of $0.003\mu\text{m}$ is checked by CNC counter for all products before shipment.

Low Degas Characteristic

- Pollution by degas, mainly water from inner wall of filter is causing problems in minimal gas flow and pressure processes. Ceramic filter offers superior degas characteristics compared with all-metal filter due to remarkably lower water absorption.

Dead Space Free

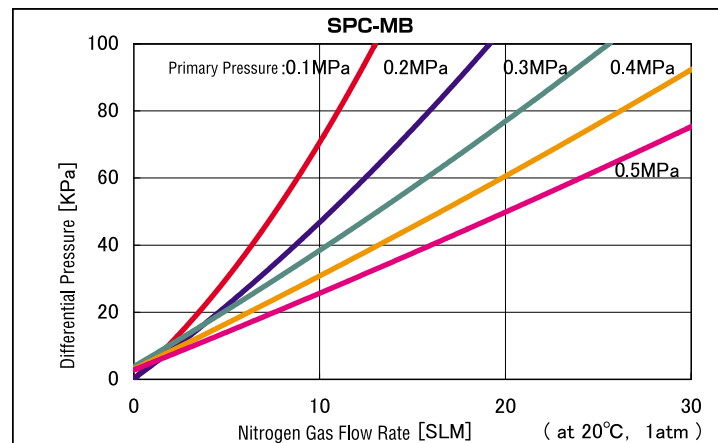
- Minimized gas residual space provides better gas replacement performance.

Specification

Filtration Accuracy	0.003 μ m
Recommended Flow Rate	10L/min
Max. Operating Pressure	17MPa(2,465PSIG) at 20°C 16.5MPa(2,392PSIG) at 120°C
Max. Allowable Differential Pressure	3MPa(435PSIG) at 20°C
Max. Continuous Operating Temperature	120°C
Baking Temperature	200°C
External Leakage	2×10^{-11} Pa · m ³ /sec or less
Materials	Housing: SUS316L (Electrochemical polishing) Roughness: Rmax0.7 μ m or less Element: Alumina ceramics(Al ₂ O ₃) Seal: PTFE
Joint	1/4" VCR®, Swagelok®, and others

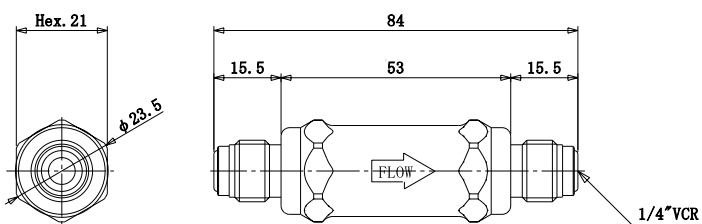
Ceramic
Gas Filter

Flow Rate Characteristics

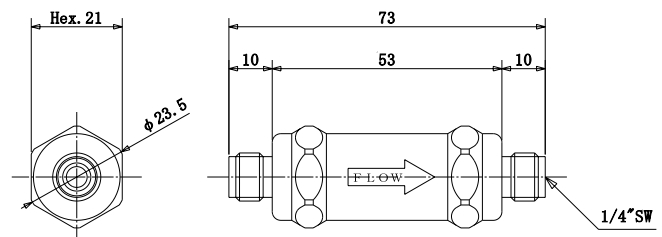


Dimensional Outline Drawings

SPC-MB-02VR



SPC-MB-02SW



How to Order

Bore Diameter Type of Joint Option

SPC - MB - 02 VR • BS

02 : 1/4"

VR : VCR®
SW : Swagelok®
For other joints,
please contact us.

B : Baking / Metal Cap
S : Internal Ultra Pure Water Pressure Feed Cleansing

※Specification is subject to change without notice.