

# High Accuracy Filtration All-Metal Gas Filter



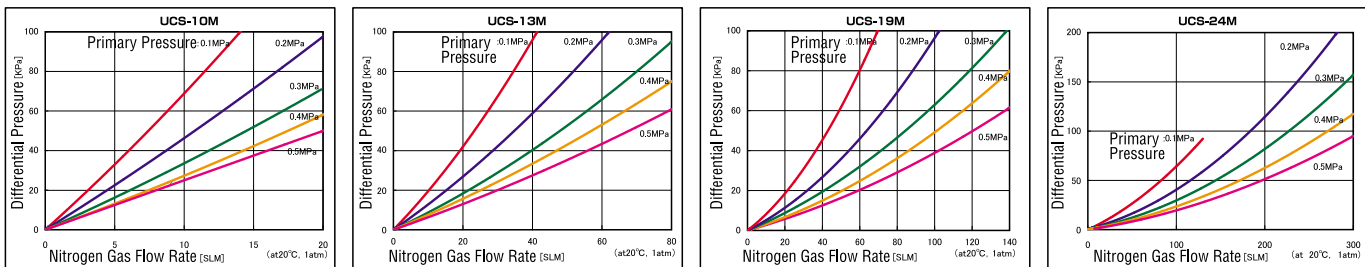
- SUS316L stainless steel used for every part
- High cleansing level: Internal special cleansing and high temperature baking with high purity N<sub>2</sub> gas for all products before shipment.
- High efficiency particle removal of 0.003 $\mu$ m or more under high flow rate and high differential pressure.
- High heat resistance 460°C
- Wide range of models available from low flow rate about 10L/min to medium flow rate about 250L/min.
- Low pressure loss: Extremely lower pressure loss and compact size compared with conventional metal filter realizing high gas flow rate.

## Specification

Filtration Accuracy	0.003 $\mu$ m
Recommended Flow Rate	10M $\cdots$ 15L/min, 13M $\cdots$ 60L/min, 19M $\cdots$ 120L/min, 24M $\cdots$ 250L/min
Max. Operating Pressure	17MPa (2,465PSIG) at 20°C    16.5MPa (2,392PSIG) at 120°C
Max. Allowable Differential Pressure	15MPa (2,175PSIG) at 20°C
Max. Allowable Temperature	460°C (inert gas)
External Leakage	2 $\times$ 10 <sup>-11</sup> Pa $\cdot$ m <sup>3</sup> /sec or less
Materials	Housing: SUS316L (Electrochemical polishing)    Element: SUS316L Roughness: Rmax0.5 $\mu$ m or less
Standard Specification	Baking, pure water special cleansing (inside of filter)
Joint	1/4", 3/8", 1/2"    VCR®, Swagelok®, and others

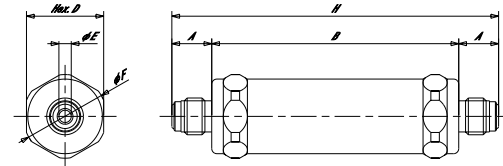
Metal Gas Filter

## Flow Rate Characteristics



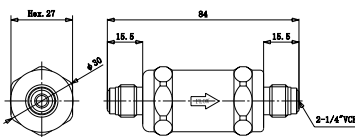
## Dimensions

Model	A(mm)	B(mm)	D(mm)	E(inch)	F(mm)	H(mm)
UCS-10M (13M) -02VR	15.5	53.0	Hex.27	1/4	$\phi$ 30.0	84.0
UCS-10M (13M) -02SW	10.0	53.0	Hex.27	1/4	$\phi$ 30.0	73.0
UCS-19M-02VR	15.5	96.0	Hex.30	1/4	$\phi$ 32.5	127.0
UCS-19M-02SW	10.0	96.0	Hex.30	1/4	$\phi$ 32.5	116.0
UCS-24M-02VR	15.5	98.0	Hex.37	1/4	$\phi$ 41.0	129.0
UCS-24M-02SW	10.0	98.0	Hex.37	1/4	$\phi$ 41.0	118.0

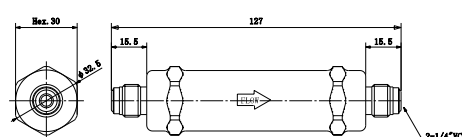


## Dimensional Outline Drawings

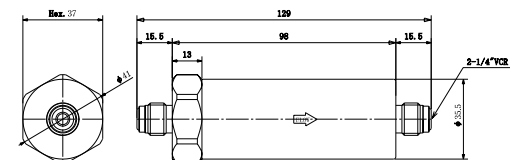
UCS-10M(13M)-02VR



UCS-19M-02VR



UCS-24M-02VR



## How to Order

Recommended Flow Rate    Bore Diameter    Type of Joint

**UCS - 10 M - 02 VR**

10 : 15SLPM  
13 : 60SLPM  
19 : 120SLPM  
24 : 250SLPM

02 : 1/4"  
03 : 3/8"  
04 : 1/2"

VR : VCR®  
SW : Swagelok®  
For other joints,  
please contact us.

※Specification is subject to change without notice.