

HASTELLOY® All-Metal Gas Filter



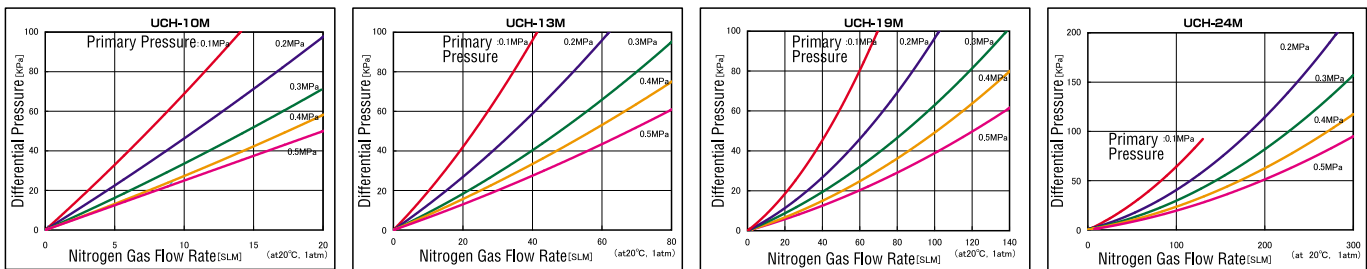
- HASTELLOY® used for every part
- High cleansing level: Internal special cleansing and high temperature baking with high purity N₂ gas for all products before shipment.
- High efficiency particle removal of 0.003 μ m or more under high flow rate and high differential pressure.
- High heat resistance 460°C
- Wide range of models available from low flow rate about 10L/min to medium flow rate about 250L/min.
- Low pressure loss: Extremely lower pressure loss and compact size compared with conventional metal filter realizing high gas flow rate.

Specification

Filtration Accuracy	0.003 μ m
Recommended Flow Rate	10M···15L/min, 13M···60L/min, 19M···120L/min, 24M···250L/min
Max. Operating Pressure	17MPa (2,465PSIG) at 20°C 16.5MPa (2,392PSIG) at 120°C
Max. Allowable Differential Pressure	15MPa (2,175PSIG) at 20°C
Max. Continuous Operating Temperature	460°C (inert gas)
External Leakage	2 \times 10 ⁻¹¹ Pa·m ³ /sec or less
Materials	Housing: HASTELLOY® C-22 (Electrochemical polishing) Element: HASTELLOY® C-276 Roughness: Rmax0.5 μ m or less
Joint	1/4", 3/8", 1/2" VCR®, Swagelok®, and others

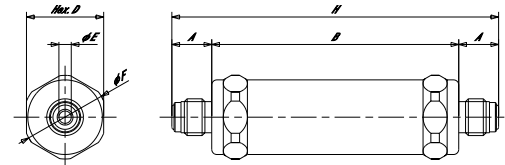
HASTELLOY
Gas Filter

Flow Rate Characteristics



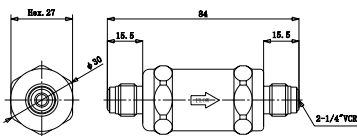
Dimensions

Model	A(mm)	B(mm)	D(mm)	E(inch)	F(mm)	H(mm)
UCH-10M (13M) -02VR	15.5	53.0	Hex.27	1/4	ϕ 30.0	84.0
UCH-10M (13M) -02SW	10.0	53.0	Hex.27	1/4	ϕ 30.0	73.0
UCH-19M-02VR	15.5	96.0	Hex.30	1/4	ϕ 32.5	127.0
UCH-19M-02SW	10.0	96.0	Hex.30	1/4	ϕ 32.5	116.0
UCH-24M-02VR	15.5	98.0	Hex.37	1/4	ϕ 41.0	129.0
UCH-24M-02SW	10.0	98.0	Hex.37	1/4	ϕ 41.0	118.0

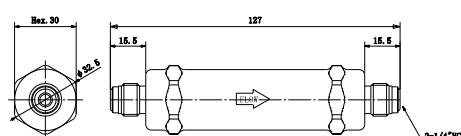


Dimensional Outline Drawings

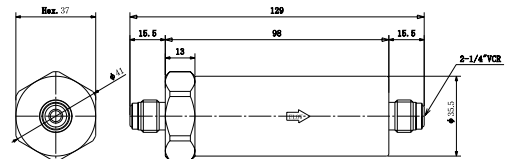
UCH-10M(13M)-02VR



UCH-19M-02VR



UCH-24M-02VR



How to Order

Recommended Flow Rate Bore Diameter Type of Joint
UCH - 10 M - 02 VR

10 : 15SLPM
 13 : 60SLPM
 19 : 120SLPM
 24 : 250SLPM

02 : 1/4"
 03 : 3/8"
 04 : 1/2"

VR : VCR®
 SW : Swagelok®
 For other joints,
 please contact us.

※Specification is subject to change without notice.